

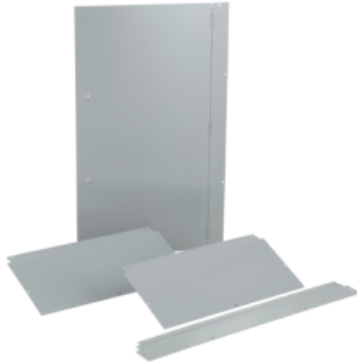
Product data sheet

Characteristics

HCM73TSD

Trim, I-Line PNLBRD, hcm, surface, 4 pcs, w/
door, 32x73x8.25 in

Product availability : Stock - Normally stocked in distribution facility



Main

Range	I-Line
Product or Component Type	Trim
Parts Quantity	4

Complementary

Width	32.25 in (819.15 mm)
Height	73 in (1854.20 mm)
Product Destination	Panelboard HCM 32 in (812.80 mm) 73 in (1854.20 mm) 8.25 in (209.55 mm)
Device Mounting	Surface
Number of Door	1
Net Weight	67.00 lb(US) (30.39 kg)

Environment

Standards	CULus CE
-----------	-------------

Ordering and shipping details

Category	00112 - I-LINE PB RTA TRIMS
Discount Schedule	PE1A
GTIN	00785901089162
Nbr. of units in pkg.	1
Package weight(Lbs)	67 lb(US) (30.39 kg)
Returnability	Yes
Country of origin	US

* Price is "List Price" and may be subject to a trade discount – check with your local distributor or retailer for actual price.

Packing Units

Package 1 Height	0.21 ft (0.064 m)
Package 1 width	2.40 ft (0.732 m)
Package 1 Length	4.04 ft (1.232 m)

Offer Sustainability

Sustainable offer status	Green Premium product
California proposition 65	WARNING: This product can expose you to chemicals including: Nickel compounds, which is known to the State of California to cause cancer, and Bisphenol A (BPA), which is known to the State of California to cause birth defects or other reproductive harm. For more information go to www.P65Warnings.ca.gov
REACH Regulation	REACH Declaration
EU RoHS Directive	Compliant EU RoHS Declaration
Mercury free	Yes
RoHS exemption information	Yes
China RoHS Regulation	China RoHS declaration Product out of China RoHS scope. Substance declaration for your information.
Environmental Disclosure	Product Environmental Profile
PVC free	Yes

Contractual warranty

Warranty	18 months
----------	-----------